


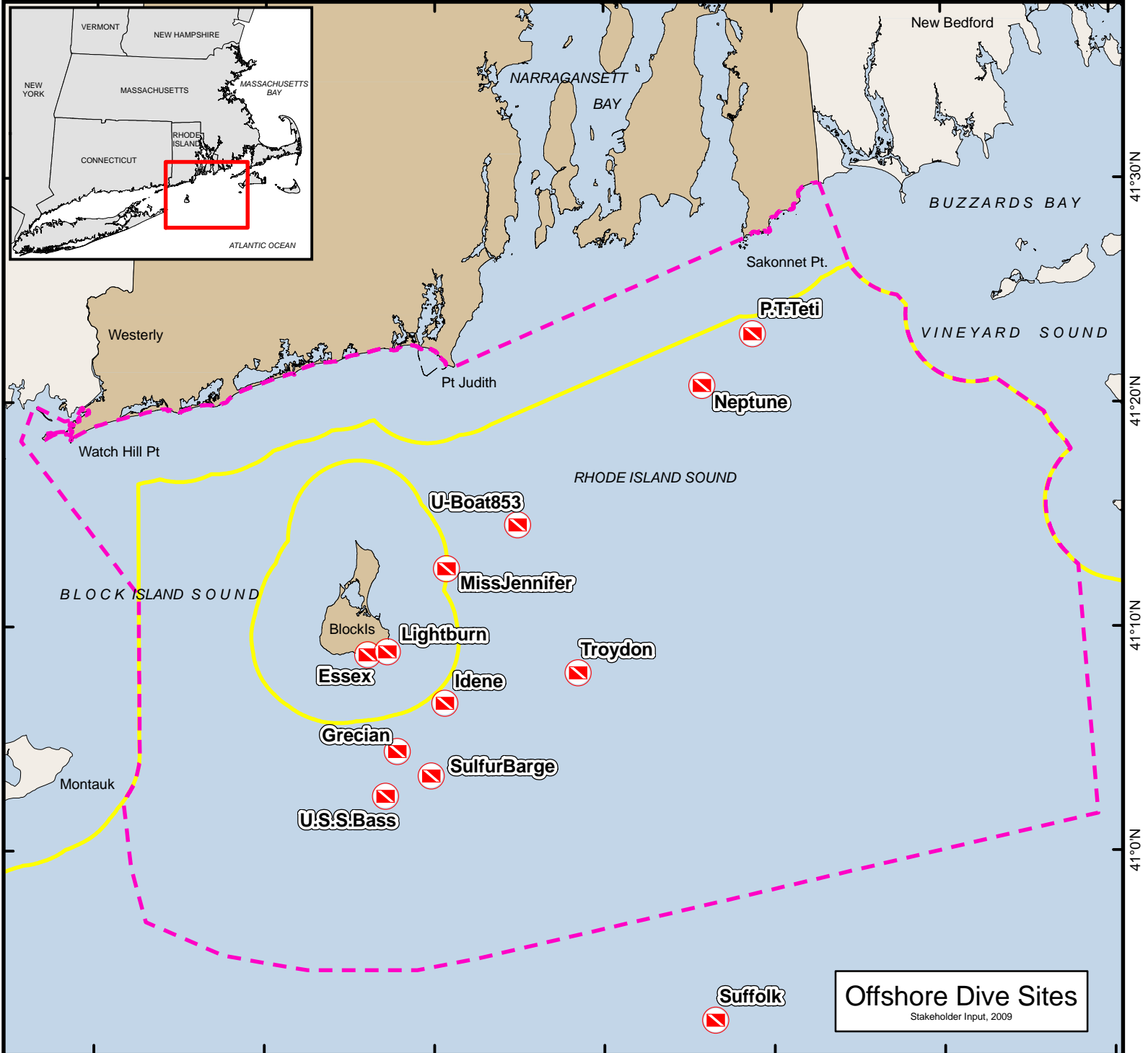


# Rhode Island Ocean Special Area Management Plan (SAMP)

71°50'W 71°40'W 71°30'W 71°20'W 71°10'W 71°0'W 70°50'W

## Map Key

-  OceanSAMP Study Area
-  State/Federal Waters
-  Offshore Dive Sites  
*Shipwreck names*



Coordinate System:

Projection: RI Stateplane  
Units: Feet  
FIPS Zone: 3800  
Datum: NAD83

Map Base Data:

State Borders: RIGIS; MAGIS; CTGIS  
SAMP Study Area: RI SAMP Database  
State Waters: MMS SLA Boundary  
Bathymetry: Interpolated from NOS Soundings

For Project Background Information:  
<http://seagrant.gso.uri.edu/oceansamp>

For Project Map and Data Products:  
[http://www.narrbay.org/d\\_projects/oceansamp](http://www.narrbay.org/d_projects/oceansamp)



**Offshore Dive Sites**  
Stakeholder Input, 2009